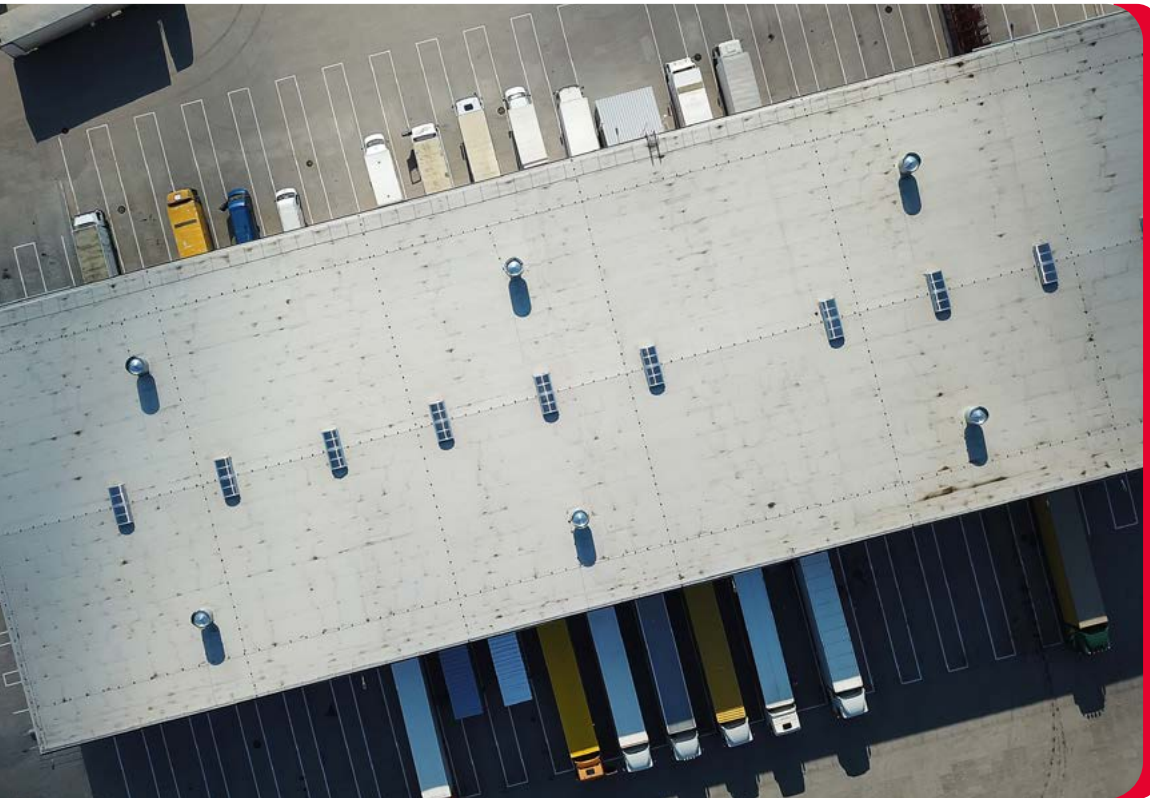


Use case

Integrated depot and route optimization with PTV OptiFlow



Are you tired of the cumbersome task of breaking down your planning process by first assigning deliveries to a depot and then optimizing routes for each depot individually?

PTV OptiFlow offers a seamless solution that integrates these steps, streamlining your logistics operations.



Unified planning with PTV OptiFlow

Traditionally, logistics planning involves multiple stages: first allocating deliveries to specific depots based on geographical and operational constraints, and then creating optimal routes for each depot. This fragmented approach can be time consuming, prone to errors, and inefficient. PTV OptiFlow eliminates these inefficiencies by combining depot assignment and route optimization into a single, cohesive process.

Key features:

Integrated depot and route optimization

PTV OptiFlow simultaneously optimizes depot assignments and delivery routes. This holistic approach ensures that all factors, including your vehicle capacities, delivery windows, and depot capacities, are considered in one comprehensive plan.

Enhanced efficiency

By unifying the planning process, PTV OptiFlow reduces the time and effort required for your logistics planning. This results in significant cost savings and improved operational efficiency.

Benefits across the board

For your warehouse or depot

- ▶ A unified planning process leads to better utilization of your resources and smoother operations at your depot.

For your drivers

- ▶ Drivers benefit from optimized routes that reduce travel time and fuel consumption, leading to less stress and higher job satisfaction.

For your customers

- ▶ Improved delivery times and reliability enhance customer satisfaction and loyalty.

For your transport planners

- ▶ The simplified planning process saves time and reduces the potential for human error, allowing your planners to focus on strategic tasks.

For your company

- ▶ Overall cost savings and improved efficiency enhance your company's competitiveness and profitability.

Conclusion

PTV OptiFlow revolutionizes your logistics planning process by integrating depot assignment and route optimization into a single step. This streamlined approach not only saves time and reduces errors but also enhances your overall operational efficiency. Adopting PTV OptiFlow helps you achieve significant cost savings, improve service quality, and stay competitive in a rapidly evolving market.



Plan. Optimize. Execute.

We make road logistics more intelligent, efficient, and sustainable

Explore our innovative software suite designed to revolutionize your delivery, streamlining every phase from planning to execution for maximum efficiency and cost savings.

PTV Logistics GmbH

Stumpfstraße 1
76131 Karlsruhe
Germany

www.ptvlogistics.com